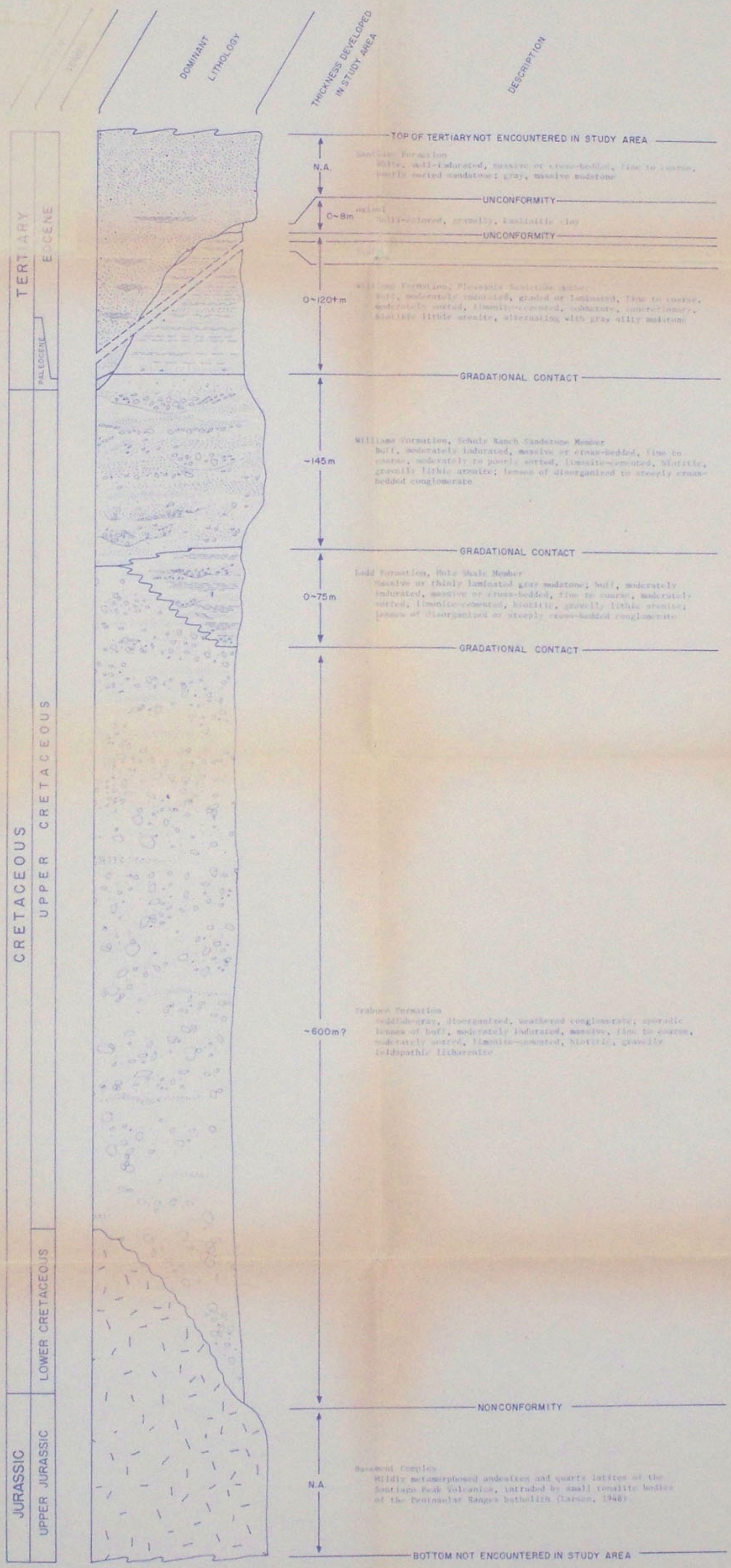


# GENERALIZED STRATIGRAPHIC COLUMN OF THE NORTHERN CORNER OF CAMP PENDLETON



GEOLOGY AND LATE CRETACEOUS DEPOSITIONAL ENVIRONMENTS  
IN THE NORTHERN CORNER OF CAMP PENDLETON,  
SOUTHERN CALIFORNIA  
FRANK GROFFIE, 1985